



PERRYDALE PROJECT FILE:

Project: The Re-Fitting of Selim



Background:

Selim was a very quaint 38' cruiser stern narrowboat built by Delph Boats in 1984. Despite her age, the shell was in excellent condition and with a Beta 25hp engine added only 8 years ago, she fitted the purchase criteria of the new owners as their garden mooring meant that they had to find a boat that was no longer than 38'.

From the interior it was clear that this boat had been well loved but as such she was tired and in need of an update. In Particular the bathroom and galley were extremely small, not uncommon for such a short boat. With modern thinking there was the opportunity to make these far more practical and comfortable and so we worked with the new owners to obtain a transformation that achieved everything that they wanted from a modern boat but which because of the age of the boat, was also a sensible price.

The Transformation:

This was done in conjunction with a new build over a 6 month winter period; the owners taking advantage of piggybacking on some of the finishes going into the new build in order to keep costs reasonable.

The old interior was completely stripped out so that spray foam insulation could be applied and a new floor put in.



The ceiling was then finished with white tongue and groove profile boards and the upper and lower cabin sides lined in oak faced ply which was painted in Valsper Honey and trimmed with natural wood. The floor was bamboo planks.



The small boat length meant that to get a good sized bathroom, galley and saloon there would have to be compromise and this came in the form of combining the saloon and bedroom. Consequently entry off the front deck was into the saloon cum bedroom, the bright red sofa being a sofa bed.



Before



After

To maximise on an open airy feel, the saloon was combined with the galley and a large side hatch was added between the two, beneath which was a lift up breakfast bar.



The good sized galley then offered plenty of space for catering, especially on longer holidays.



Before



After

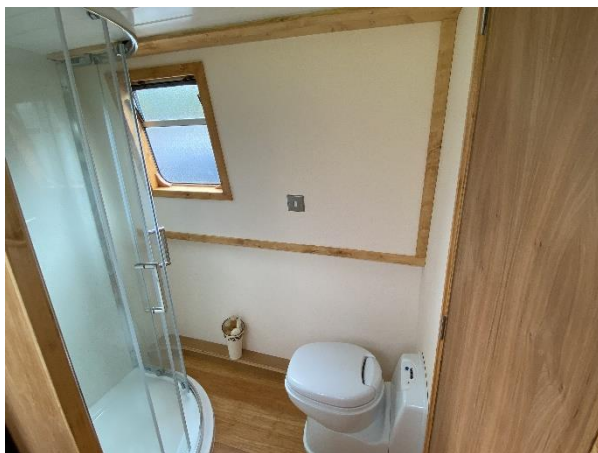


As the owners wanted to do some extensive cruising they needed a storage zone, created by these large cupboards that divided the galley and the bathroom and offered a mix of shelving and hanging space.



The cabin concludes with a large walk-through bathroom; the owners wanting an area where if they come in from the stern deck on a bad weather day, they have somewhere to discard and then dry out wet gear. They also wanted a large shower, this one being 800mm x 800mm, as well as plenty of space for dressing.

Before



After

The limited budget meant that the owners did not want a full re-spray but they did want a makeover; so the existing paintwork was sanded back and new paintwork applied over the top. This did not give the top quality finish of our usual paint jobs but for the age of the boat, gave it the makeover sought and the owners the ability to readily touch up scratches.



When she went into the workshop the boat was called Selim and when she came out she was Daphne Iris, thus sealing her transformation.



Challenges:

With older boats it can be difficult to re-design an interior around existing windows and in the case of Daphne Iris one was taken out and blocked up and a large side hatch cut into the side.

The Morso Squirrel stove was also moved from the centre of the saloon to the front, meaning that the old chimney hole has to be sealed with a roof plate and a new gap cut into the roof.