



Perrydale
Cruiser Stern/Semi-
Trad/Traditional
Narrow Boat
Length (ft)

Client:

SAMPLE

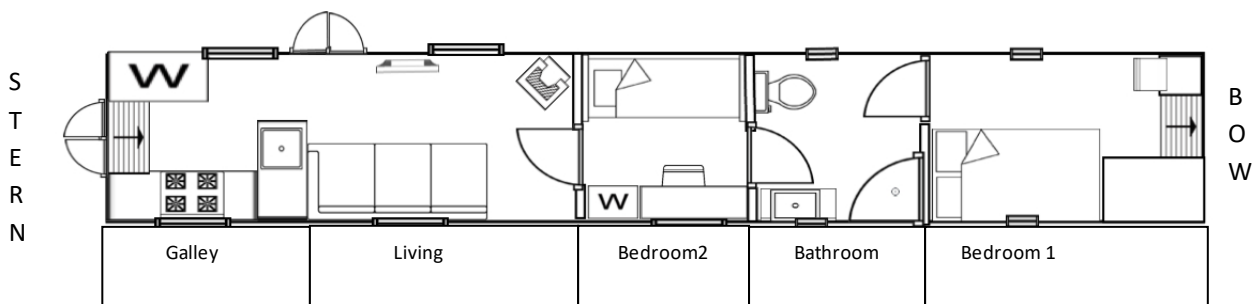
Date:

Contents

	Page
Layout/Fit	3
Shell	4
Exterior Description	5
Propulsion	6
Heating & Water Heating	7
Electric	8
Galley (Kitchen)	9
Living Room	10
Bedroom 2	11
Bathroom	12
Master Bedroom	13
Warranty	14
Security/Safety	15
Time Schedule	16

Layout/Fit Out (from Stern)

- Walk through galley (Incorporating “Wet” locker)
- Living room
- Bedroom 2
- Walk through bathroom
- Bedroom 1
- Front deck area (bow)
- Interior Décor:
 - Roof: Oak faced ply boards to be used on interior sides and roof, 12mm sides and 6mm roof. Hard wood trim throughout fixed with screws and dowels. The top sides and roof are to be painted with egg shell finish, the other boards plus trim will have three coats of satin varnish
- Upper Cabin Sides: As roof
- Lower Cabin Sides: As roof but varnished, not painted
- Floor: Durable bamboo planks in ash finish
- Window Coverings:



Shell

- Supplied by
- Specification
- Diesel tank, location and size
- Water Tank, location and size and subsequent location of water pump

Exterior Description

- Colour of boat - Basic package accommodates for single solid colour with coach line, plus coach line colour on one bar of the counter and the bow
- Anti-slip paint on roof, front deck area and side gunwale
- Blacking on hull – Option 2-pack
- 5 mushroom vents: Brass (Option: To be lacquered); chrome or other
- Windows:
 - Large windows – each 36” wide; finish -
 - Medium sized window – 18” wide; finish
 - Portholes - standard 15” diameter – Option 18”, finish
 - Houdini hatches
 - Side Hatches – option inset glass doors/drop in swans
 - Drop windows
- Option - Front and rear deck lights
- 12v front head light
- Navigation lights – set in plastic, brass, chrome
- Front and centre rope guides
- Option - pole and plank holders, brass or chrome
- Horn
- TV aerial input at bow
- Front gas locker
- 240V inlet at stern
- Flooring for stern deck and front deck
- Option - Seats/lockers on back and/or front deck, covered in same surface as Flooring or oak
- Option - Table for back/front deck, 1 desmo leg
- Option - Snug deck with built in seating and canvas or atrium cover

Propulsion

Diesel Engine

- Make, model and size
- Gearbox PRM 150 2:1 hydraulic
- warranty on engine: Years
- 17" 3-blade propeller
- Bow thrusters 60 kgf with switch panel
- Exhaust system 24" dry silencer
- Alternators twin: and amp

Electric Propulsion System

- Specification and supplier

Heating

- Saloon – Multi-fuel stove or Refleks diesel
- Webasto central heating linked to: radiators, number, location, and type

Water Heating

- (Size) Sure-cal calorifier with built in 1kw emersion heater (twin coil)
- Calorifier to be connected into engine water system and central heating system

Electric

- 12/240v
- 3000w Victron inverter/charger
- Switches and sockets in brass/chrome/other (Sockets to be low level in living area, waist level in galley and bedrooms)
- LED spotlights in brass/chrome/other, except for bathroom where they are chrome
- Cupboard down lighters in brass/chrome/other
- Amount of spotlights will be: 4 in bedrooms, 3 in bathroom, 6 in living room, 4 in kitchen.
- 1 starter battery and 5 leisure batteries – all AGM's
- Galvanic isolator

Galley (Kitchen)

- Floor – if different to that specified on page 3
- Kitchen units (style and colour plus handles)
- Worktops (Type and colour)

Brief Description:

- Unit numbers and type
- Option: “Wet” cupboard and magi corners
- Sink type and drainer, plus tap type and style
- Appliances:
- Fridge/freezer
- Washing machine
- Cooker and hob
- Microwave
- Dishwasher

Living Room (Saloon)

- 32 inch flat screen TV with solid wood TV surround
- Style and finish of fireplace
- Seating:
 - Large L shaped seating area with drop in table to be upholstered in fabric which will convert to a double bed
 - Pullman dinette, with flip back to external seat
 - Free standing sofa/chairs
 - Option - Cube footstool to match
- Option – Wall lights, under gunwale lighting
- Option – Gunwale cabinets

Bedroom 2

- Bed type
- Units
- Wardrobe with hanging/shelving
- Desk with chair plus socket for office area
- Dressing table
- Drawers
- TV points at foot of each bed
- Reading lights at head of bed

Bathroom

- Type – Walk Through, semi walk through, side
- 900/900 quadrant shower enclosure:
 - Shower boards
 - Tiles
- Chrome non-thermostatic mixer shower
- 12v extractor fan
- Bespoke vanity unit
- Sink type
- Towel radiator
- Large mirror mounted on upper wall
- Toilet
 - Cassette (Option spare cassette)
 - Pump Out – Type, including size and location of holding tank
 - Composting
 - Incinerator
- Washing machine/tumble dryer

Master Bedroom

- Bed Type:
- ¾ size cabin bed which will have pull out sides to make it into 4'6" double bed
- Cross bed
- Storage within this unit

- Mattress – Client to supply their own

- Units:
- Wardrobe – hanging/shelving
- Dressing table
- Desk
- Cupboard above bed with 2 brass down lighters

- TV

Warranty

- The appliances come with manufacturers' warranty; cards to enable the client to register this being included within the hand over pack
- Warranty for the shell will vary depending on which shell builder is selected
- Engine has years manufacturer's warranty and 12 months warranty with the engine fitter
- 12 months warranty from date of sale with Perrydale Narrowboats (travel costs may occur outside a 10 mile radius of Ashwood Marina)

Please Note:

Appliances, engine, shell and paint work (ie if boat is scratched) are not guaranteed by Perrydale Narrowboats

Security/Safety

- Either front or rear door(s) is(are) secured by padlock
- Rear, side opening and front doors are all secured by brass door bolts and cabin hooks
- Fire/smoke alarms are fitted in bedroom, kitchen, living room. Also carbon monoxide tester in living area.
- Fire extinguishers will be located by engine bay, bedroom and living room – also fire blanket in kitchen
- In line with Recreational Craft Regulations (RCR), a Certificate of Conformity will be issued on hand over, together with the owner's manual; a brass plaque is also fitted confirming conformity to the regulations. Rather than self certification, Perrydale Narrowboats use an independent surveyor to inspect and award the RCR to give clients peace of mind that the directive has been correctly interpreted and adhered to.

Time Schedule

Shell to arrive at Ashwood Marina on; anticipated hand over:

Please note: Unforeseen circumstances such as illness, bad weather, alterations and added extras will prolong the build. We will however do our utmost to complete the boat on time.

Anyone wishing to come and look at the work in progress on their vessel is welcome. An appointment to arrange is necessary. Please note customers view vessels at their own risk and Perrydale Narrowboats or Ashwood Marina Ltd accept no liability for any accidents that occur on visits of this nature, either scheduled/unscheduled and/or supervised/unsupervised.

I have read and accept the contents of this document:

Customer's signature Date

Name:

(Please print)

